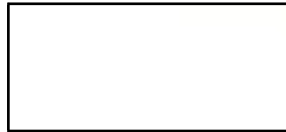


Color Chart

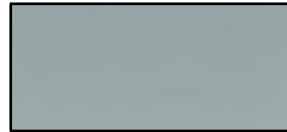
Innotek OXYPLAST THERMOCLAD



Black (H101)
RAL 9005



White (G101)
RAL 9016



Gray (D116)
RAL 7042



Dark Blue (C102)
RAL 5011



Blue (C123)
RAL 5005



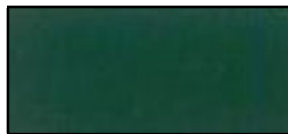
Red (A112)
RAL 3001



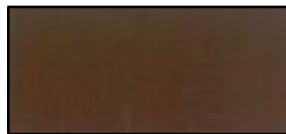
Yellow (E111)
RAL 1018



Green (B128)
RAL 6005 - alternate



Green (B121)
RAL 6005



Brown (J110)
RAL 8017

All colors shown are reproduced from actual material samples and are printed as accurately as possible. Note that due to the variances in computers and printers this color chart should only be used as a guide. For an accurate representation of a specific color please request a color panel. If material color and finish are **CRITICAL, REQUEST AN ACTUAL SAMPLE.**

Minimum order quantities may apply to available colors depending on stock.
Color availability in some polymers may be limited.

Colors may vary according to resin type and substrate.

Revision 10/13

www.protechpowder.com